

Kalamaja

ARMCHAIRS

Retro style and metropolitan spirit for the Kalamaja armchair. The solid structure in beech wood meets the lightness of the suspended leather seat, supported by the armrests with characteristic straps. A furnishing element in typical Mid-century style that fits perfectly into urban decor environments.



Armchair with structure in solid beech wood dyed Smokey Grey, shaped with variable section irregular curves and finger joints.

Seat and backrest in black saddle leather, with decorative stitching in nylon thread, fixed to the structure with metal buckles.

Seat and headrest cushion padded in foam and goose down. Upholstery in leather cat. B Nabuk L.08.13 Black, with embroidered logo in contrasting colour on the headrest cushion.

ARMCHAIRS

Armchair with structure in solid beech wood dyed Smokey Grey, shaped with variable section irregular curves and finger joints.

Seat and backrest in saddle leather, with decorative stitching in nylon thread, fixed to the structure with metal buckles.

Seat and headrest cushion padded in foam and goose down. Upholstery in Nabuk leather from the collection, with embroidered logo in contrasting colour on the headrest cushion.



F.KAA.221.A

Armchair

Standard features

L 75 D 82 H 82 cm

L 29.53 D 32.28 H 32.28 in

ARMCHAIRS

UPHOLSTERY

Leathers

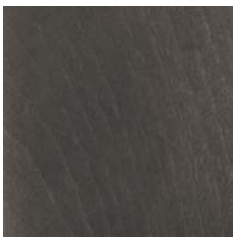
Cat. A

Cat. B

Cat. C

See "Fabrics and Leathers" sheet

STRUCTURE



Beech Wood Dyed
Smokey Grey



Tan Saddle Leather



Dark Brown Saddle
Leather



Black Saddle Leather