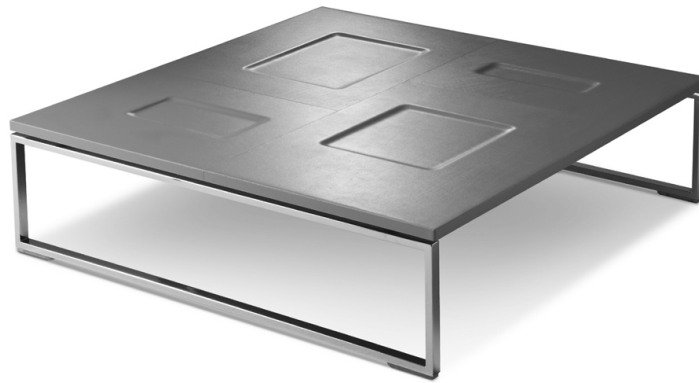


DESIGN Mauro Lipparini – 2007



Piano. Il piano è in pannello nobilitato rivestito in cuoio.

Base. Base in tubolare d'acciaio disponibile cromata o verniciata a polveri epossidiche in colore RAL a scelta.

Top. The top is in melamine coated panel covered in saddle leather.

Base. Base in tubular steel chromed or epoxy powder painted in RAL colors of your choice.

TAVOLINI – LOW TABLES

